

# Certificate of Analysis

Issued to:

CBD CALM, 25 Dolphin Street. Manchester. Greater Manchester, M12 6BG

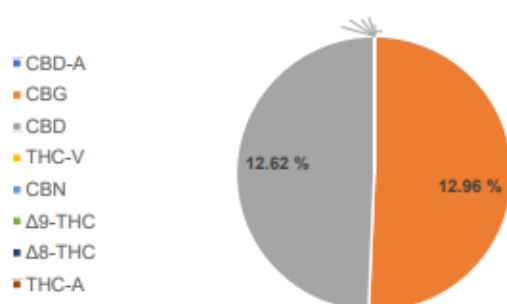
## Sample details

DATE RECEIVED	27-SEP-23	PRODUCT NO.	30919002
SAMPLE TYPE/DESCRIPTION	CBD Calm 3750mg CBD/CBG (30ml)	BATCH NO	N/A
ACUTUS SAMPLE NO.	S09951	DATE TESTED STARTED	28-Sep-23
PERFORMED BY	Ryan Morrow	DATE TESTING COMPLETE	28-Sep-23

## Certificate no: COA-CBD-927 V 1.0

All analyses were performed using the High-Performance Liquid Chromatographic (HPLC) method SOP/LAB/0033 V5.0 and quantification of Cannabinoids carried out using a certified reference standard.  
Note: This method is not an ISO standard test method.

## Cannabinoid profile



Compound	Result (%)	Result (mg/ml)
Cannabidiolic acid (CBD-A)	N.D.	N.D.
Cannabigerol (CBG)	12.96	128.23
Cannabidiol (CBD)	12.62	124.99
Tetrahydrocannabivarin (THC-V)	N.D.	N.D.
Cannabinol (CBN)	N.D.	N.D.
Delta-9-Tetrahydrocannabinol (Δ9-THC)	N.D.	N.D.
Delta-8-Tetrahydrocannabinol (Δ8-THC)	N.D.	N.D.
Tetrahydrocannabinolic acid (THC-A)	N.D.	N.D.
<b>Total Cannabinoids</b>	<b>25.58%</b>	<b>253.22 mg/ml</b>
Total Potential THC**	0.00%	0 mg/ml
Total Potential CBD**	12.62%	124.99 mg/ml

LOQ = 0.2 µg/ml

N.D. = Not Detected

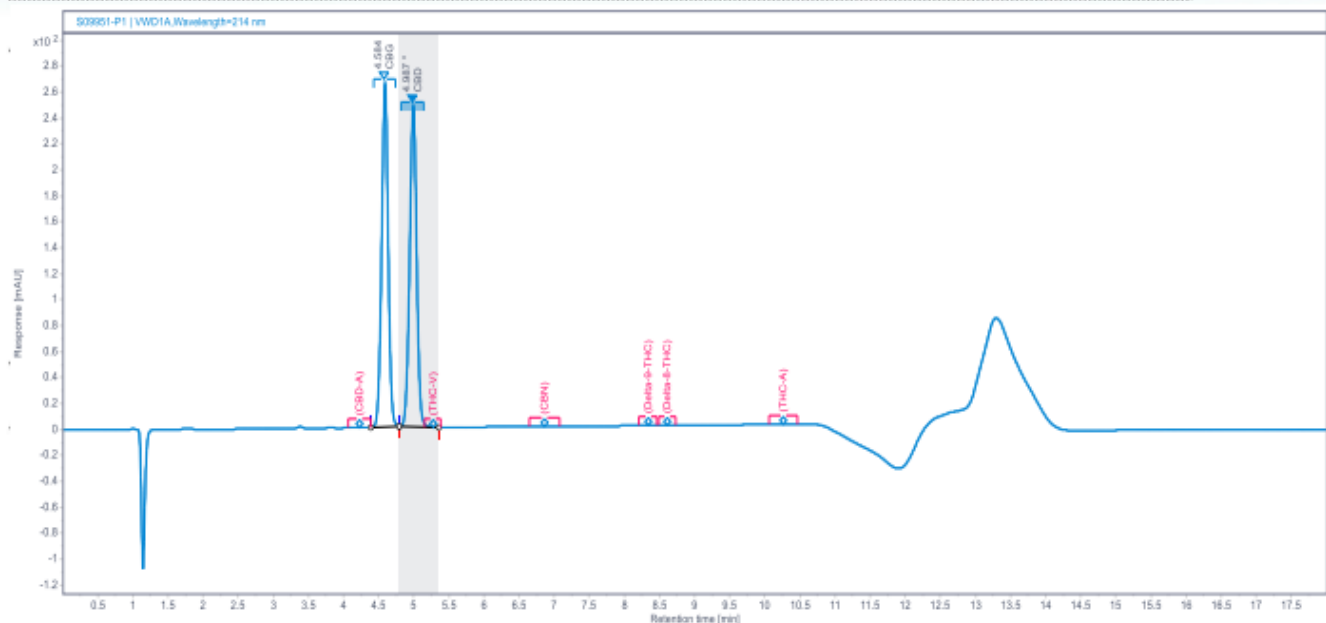
% = % (w/w) = Percent (Weight of Analyte / Weight of Product)

\* Total Cannabinoids result reflects the absolute sum of all cannabinoids detected

\*\* Total Potential THC/CBD is calculated using the following formulas to take into account the loss of carbonyl group during decarboxylation step

Total THC = Δ9-THC + (THC-A \* (0.877)) and Total CBD = CBD + (CBD-A \* (0.877))

### HPLC Chromatogram



### Additional Notes

Sampling is excluded and is the responsibility of the supplier.

\*All results reported in this certificate only relate to the sample and batch tested.

Method and measurement uncertainty available upon request.

No statement of compliance with specifications is made or implied on this certificate. However, measurement results are reviewed, where applicable, to establish where any measurement result exceeded the manufacturer's specifications.

AUTHORISED BY:

Ryan Morrow

SIGNATURE:

X

DATE:

28-Sep-23

Signed by: S-1-12-1-315006314-1134601384-3595892871-1838775116/4431998a-bd04-41f0-9ff4-35e72e3e35e4